

Areas to investigate

KS2 progress

- Writing progress was in the bottom quintile (20%) for at least two years for all pupils and middle prior attainers.
- Progress in writing was significantly below average and in the lowest 10%.
- The adjusted progress score in reading was 0.2 higher than the unadjusted score. 2 pupils had an adjustment to their score.
- The adjusted progress score in writing was 0.5 higher than the unadjusted score. 3 pupils had an adjustment to their score.

KS2 attainment

- In 2018, 52% of pupils achieved the expected standard in reading, writing and mathematics, 12 percentage points below the national proportion. This difference was not statistically significant.

KS1 attainment

- There were no meaningful trends or differences for this measure.

Phonics in 2018

- There were no meaningful trends or differences for this measure.

Behaviour

- There were no permanent exclusions in the last three years. The national average in each of these years was zero.
- The rate of total fixed term exclusions was above national for three years (2014/15 to 2016/17). In 2016/17, the rate of total fixed term exclusions (1.46%) was above the national average for schools with a similar level of deprivation (0.99%). In 2016/17, the rate of repeat exclusions (0.97%) was above the national average for schools with a similar level of deprivation (0.45%).

School context in 2018

Phase of education: Primary
Headteacher: Alastair Samuel Naismith
Pupils: 198
Gender: Mixed
Deprivation Quintile: Highest 20% (0.4)

Local authority: Hammersmith and Fulham
Admissions policy: Not applicable
Ages: 3-11
Denomination: Does not apply
Special needs provision:

Ever 6 FSM %: 60.9
English additional language %: 61.5
SEN support %: 6.6
SEN with EHC plan %: 2.0

Ethnicity

- The largest ethnic groups are: White - British (12.2%), White - any other White background (15.4%), Black or Black British - Caribbean (9.0%), Black or Black British - African (23.1%), Any other ethnic group (17.3%).
- This school has 14 out of 17 possible ethnic groups. The average number of groups for this phase of education is 9.

Number on roll

- The number of pupils in year 6 (43) was higher than all other year groups.
- The number of pupils in year 5 (17) was lower than all other year groups.

Girls

- The school was in the top 20% of all schools for the proportion of girls (56.6%).
- The percentage of girls in year 2 (73%) was higher than all other year groups.
- The percentage of girls in year 1 (41%) and year 6 (49%) was lower than all other year groups.

Disadvantaged

- The school was in the top 20% of all schools for the proportion of FSM (60.9%).
- The percentage of FSM in year 2 (73%) and year 4 (82%) was higher than all other year groups.
- The percentage of FSM in year 1 (41%) and year 5 (53%) was lower than all other year groups.
- There was one child looked after in the school.

School context 2018

English as an Additional Language

- The school was in the top 20% of all schools for the proportion of EAL (61.5%).
- The percentage of EAL in year 1 (73%) was higher than all other year groups.
- The percentage of EAL in year 2 (54%) was lower than all other year groups.
- There was a larger than average increase in the percentage of EAL pupils between 2017 and 2018.

Special Educational Needs

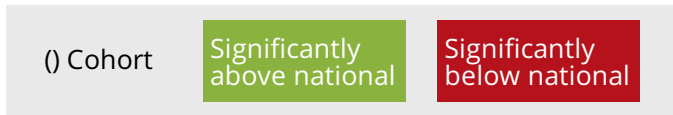
- The school was in the lowest 20% of all schools for the proportion of SEN support (6.6%).
- The percentage of SEN in year 5 (0%) was lower than all other year groups.
- There was a larger than average decrease in the percentage of SEN support pupils between 2017 and 2018.

Prior Attainment

- There was nothing significant to report for this group.

Relative progress for the past three years

Progress quintiles based on rank of progress score

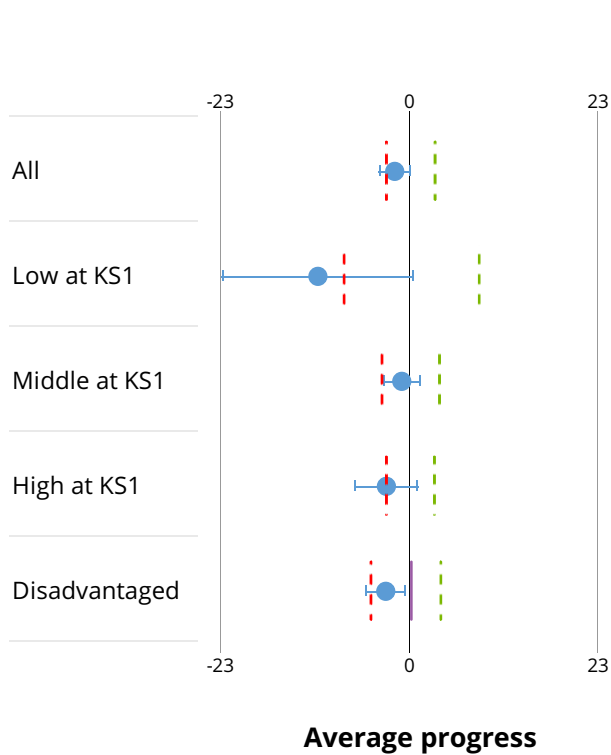


	Year	Cohort	Reading					Writing					Mathematics				
			Bottom 20%					Bottom 20%					Bottom 20%				
			Q5	Q4	Q3	Q2	Q1	Q5	Q4	Q3	Q2	Q1	Q5	Q4	Q3	Q2	Q1
Overall	2016	(22)															
	2017	(22)															
	2018	(35)															
Low at KS1	2016	(1)															
	2017	(0)															
	2018	(1)															
Middle at KS1	2016	(14)															
	2017	(12)															
	2018	(25)															
High at KS1	2016	(7)															
	2017	(10)															
	2018	(9)															
Disadvantaged	2016	(19)															
	2017	(15)															
	2018	(22)															

Notes: Statistical significance for disadvantaged pupils is against the national for other pupils. Change in methodology or calculations is indicated by a dotted line. Quintiles for 2018 are based on adjusted progress scores Previous years are based on unadjusted. Significance is only flagged for cohorts greater than 10. For cohorts of 10 or less information is greyed out. For further information on methodology see www.gov.uk/government/collections/using-ofsted-inspection-dashboard

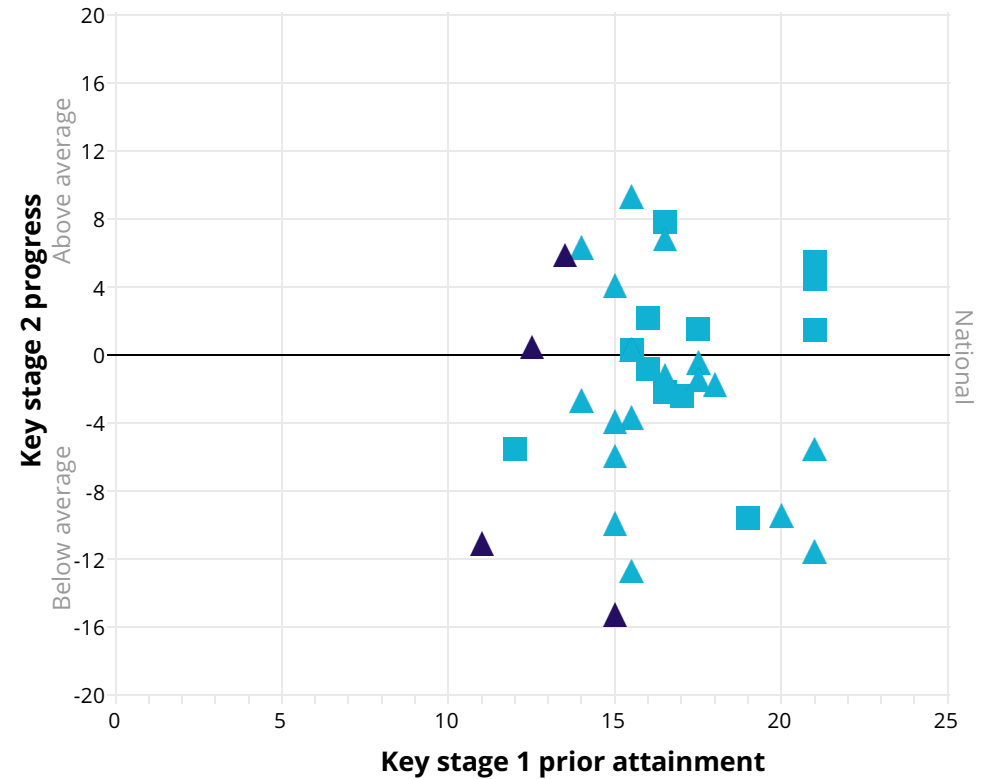
Reading progress in 2018

Reading progress scatterplot



Progress	National	Number of pupils included	Number of adjusted pupils
-1.7	0.0	35	2
-11.1	0.0	1	0
-0.9	0.0	25	1
-2.8	0.0	9	1
-2.9	0.0/0.3	22	2

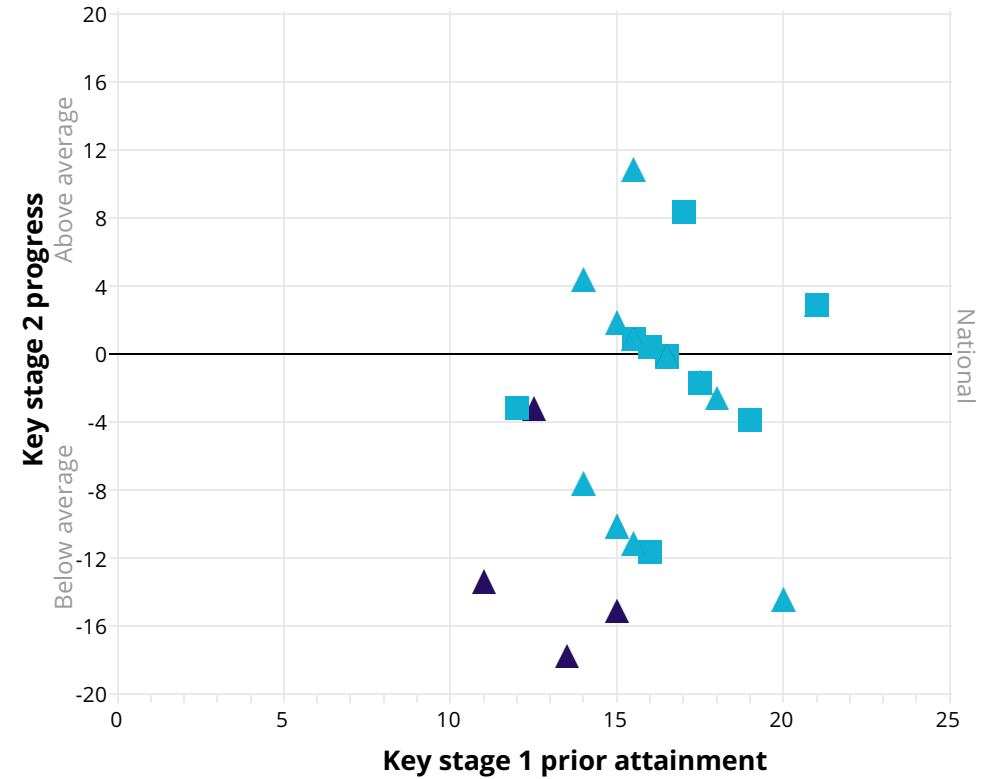
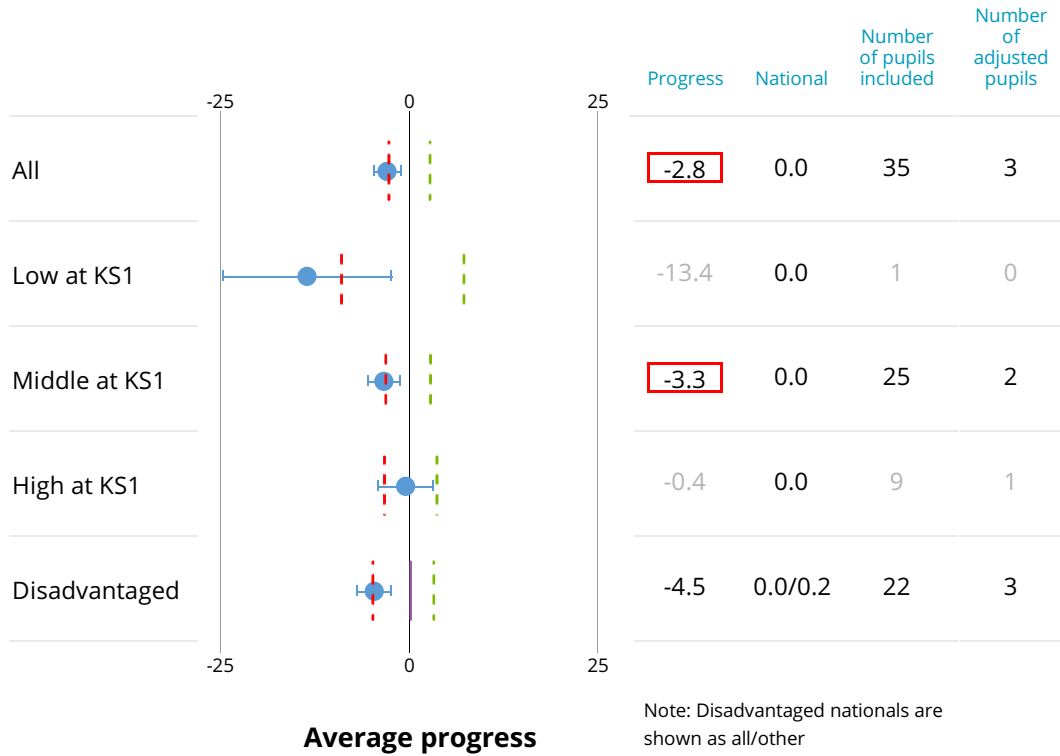
Note: Disadvantaged nationals are shown as all/other



Notes: Progress measures are based on adjusted progress scores. Significance is only flagged for cohorts greater than 10. For cohorts of 10 or fewer, information is shown in grey. Prior attainment is based on overall KS1 attainment. For further information on methodology see www.gov.uk/government/collections/using-ofsted-inspection-dashboard

Writing progress in 2018

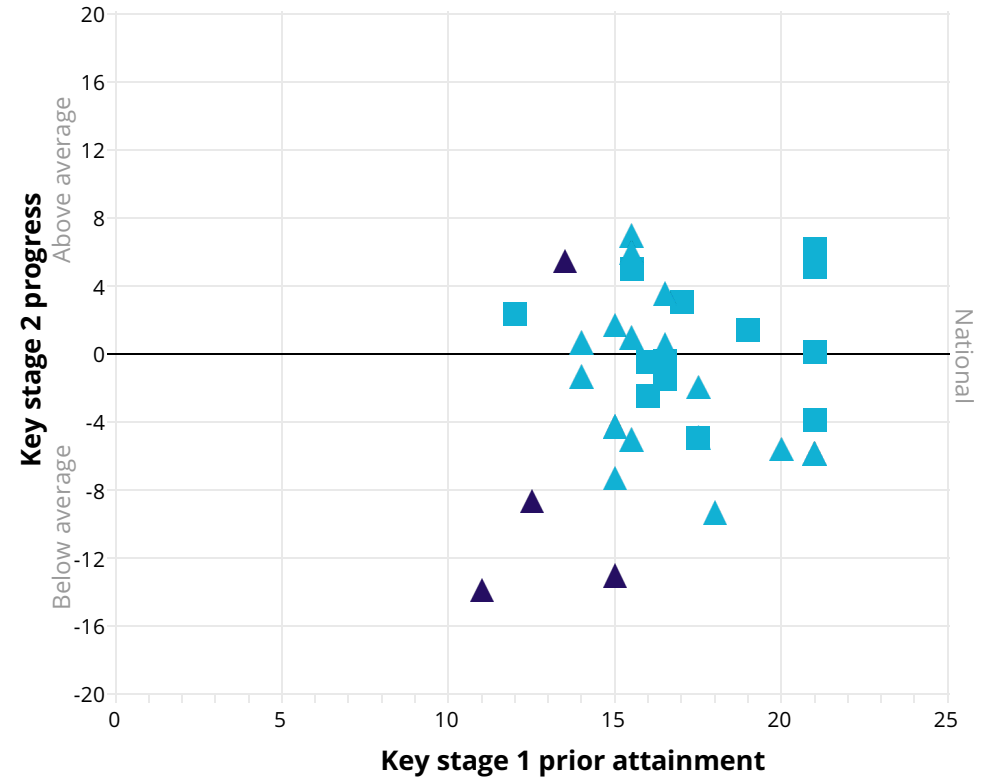
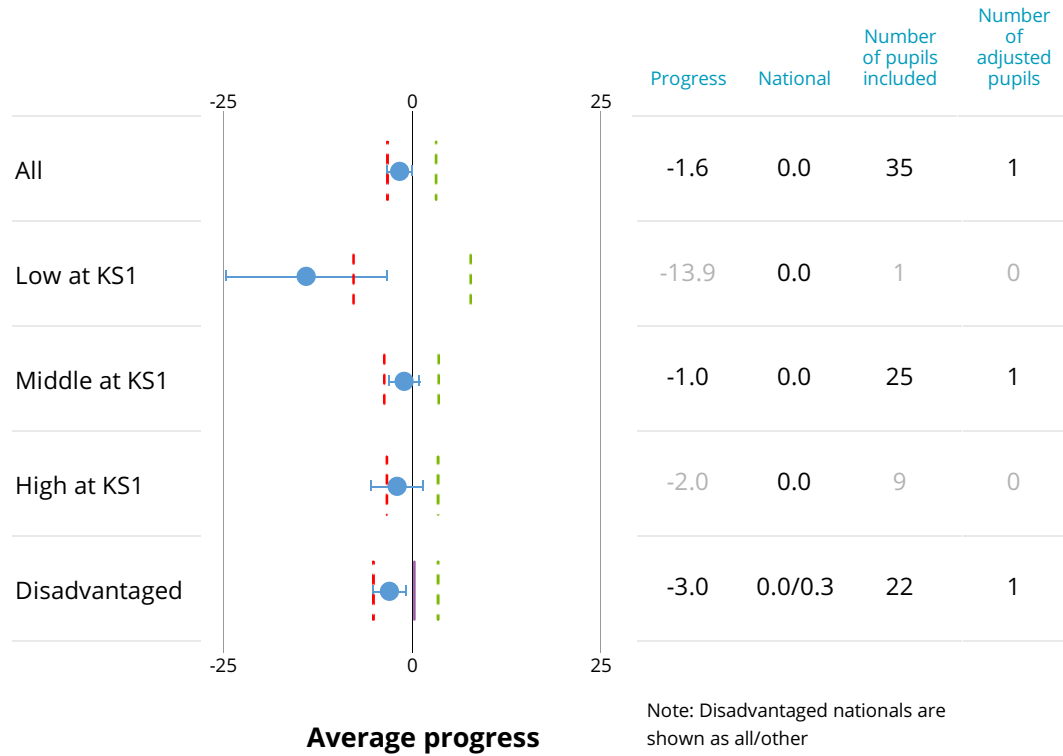
Writing progress scatterplot



Notes: Progress measures are based on adjusted progress scores. Significance is only flagged for cohorts greater than 10. For cohorts of 10 or fewer, information is shown in grey. Prior attainment is based on overall KS1 attainment. For further information on methodology see www.gov.uk/government/collections/using-ofsted-inspection-dashboard

Mathematics progress in 2018

Mathematics progress scatterplot



Notes: Progress measures are based on adjusted progress scores. Significance is only flagged for cohorts greater than 10. For cohorts of 10 or fewer, information is shown in grey. Prior attainment is based on overall KS1 attainment. For further information on methodology see www.gov.uk/government/collections/using-ofsted-inspection-dashboard

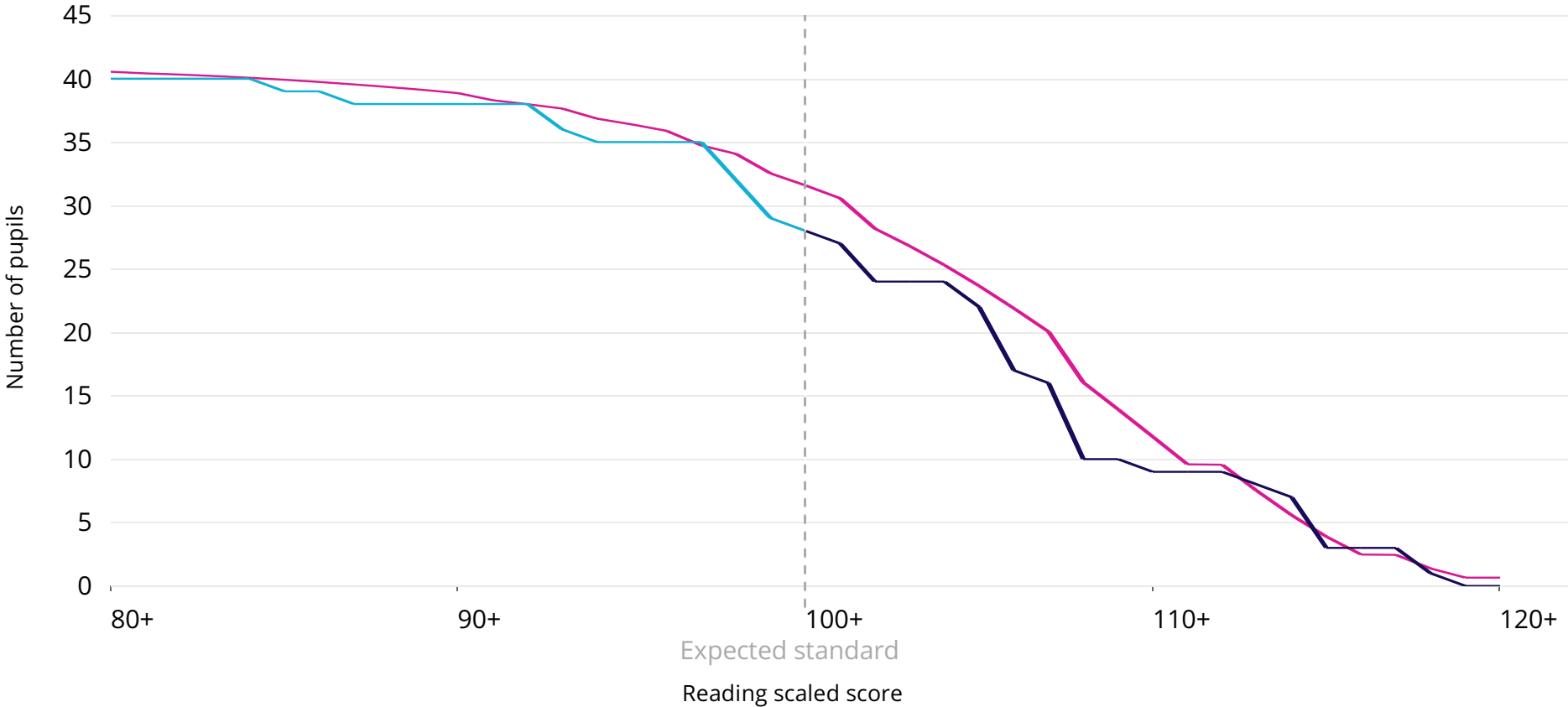
Reading scaled scores 2018

This chart shows the distribution of total marks achieved by pupils in the school compared to the national.

— National level
 — Not achieved expected standard
 — Achieved expected standard

Cohort = 42 One pupil relates to 2.4 percentage points.

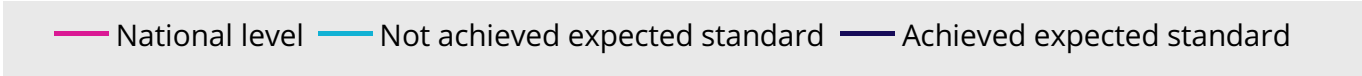
In 2018, 67% of pupils achieved the expected standard, 9 percentage points below the national. This difference was not statistically significant.



Notes: The plotted national line is the national reading percentage multiplied by the school reading attainment cohort at each average scaled score interval. For further information on methodology see www.gov.uk/government/collections/using-ofsted-inspection-dashboard

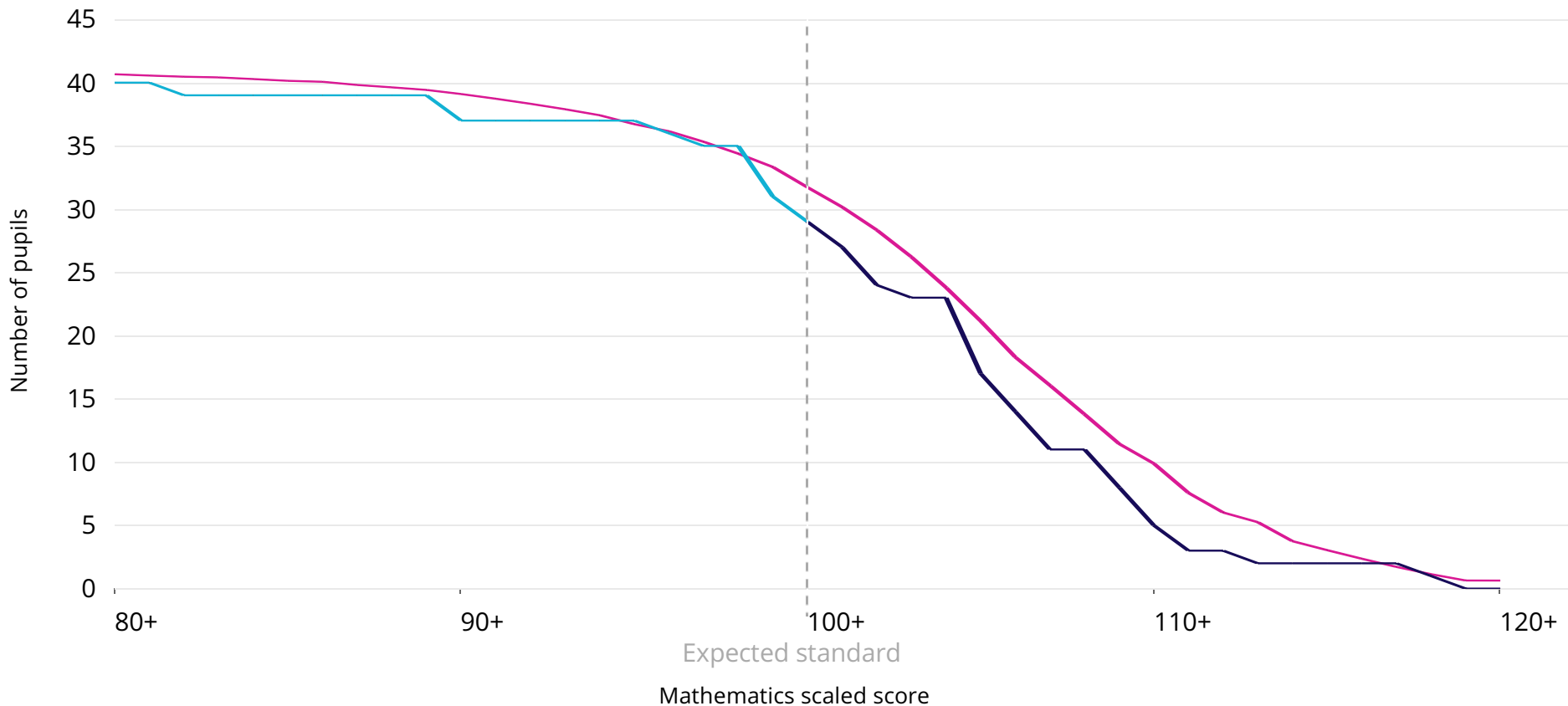
Mathematics scaled scores 2018

This chart shows the distribution of total marks achieved by pupils in the school compared to the national.



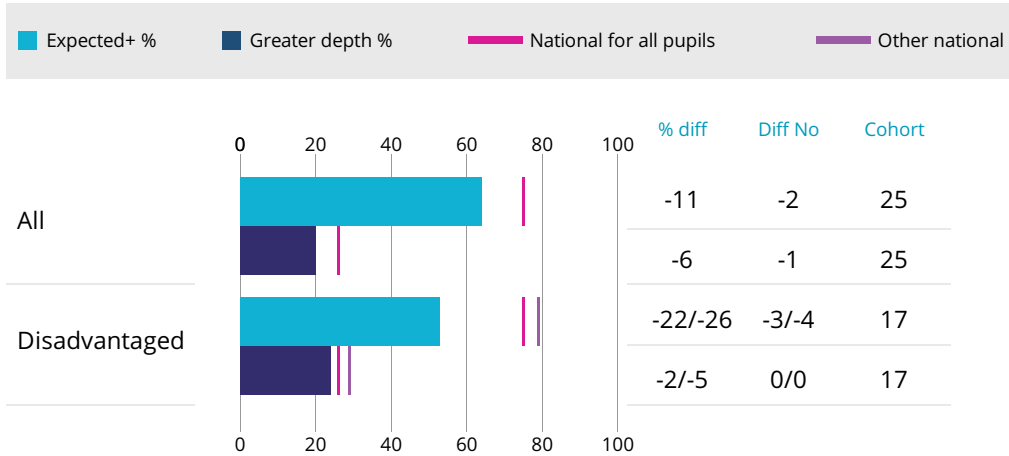
Cohort = 42 One pupil relates to 2.4 percentage points.

In 2018, 69% of pupils achieved the expected standard, 6 percentage points below the national. This difference was not statistically significant.

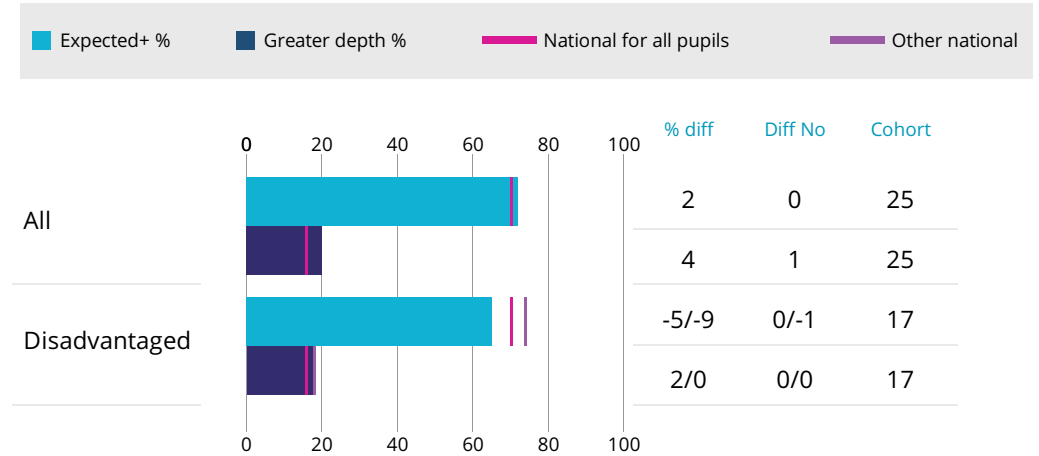


Notes: The plotted national line is the national mathematics percentage multiplied by the school mathematics attainment cohort at each average scaled score interval. For further information on methodology see www.gov.uk/government/collections/using-ofsted-inspection-dashboard

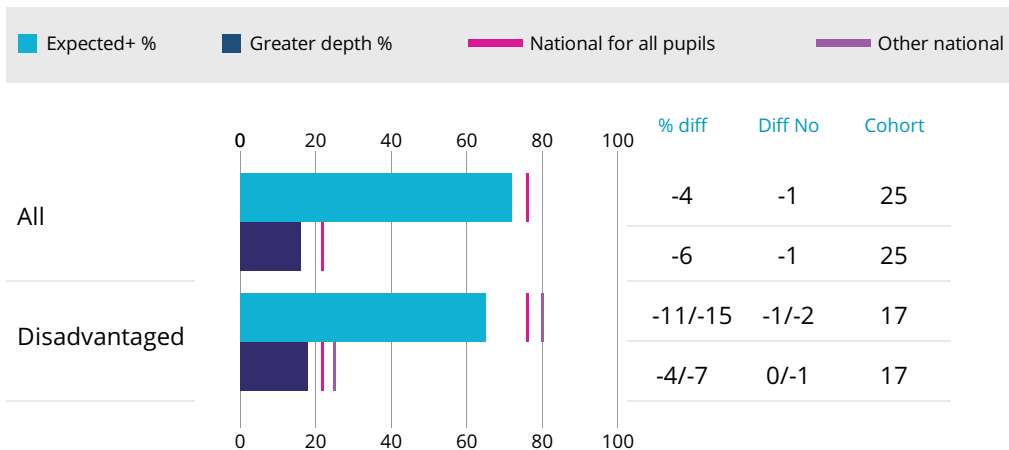
Reading



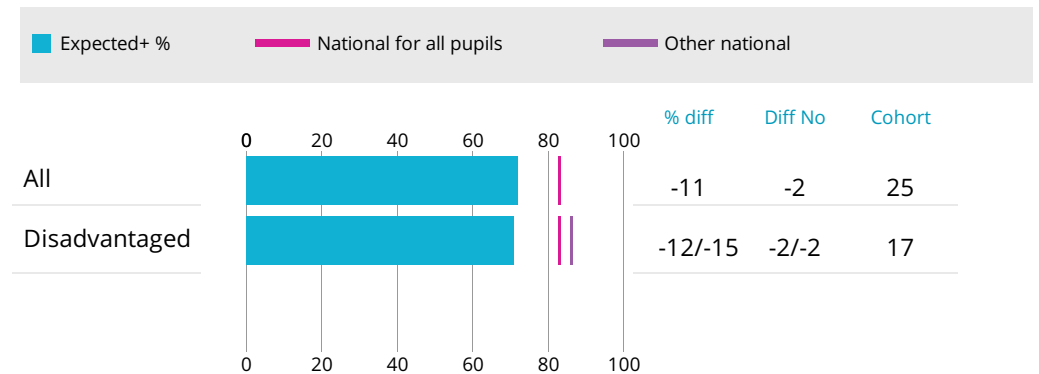
Writing



Mathematics



Science



Note: 'Diff no' value shows the number of pupils that the difference between school and national represents, and is always rounded down to a whole number. Disadvantaged nationals are shown as all/other (other relates to pupils who are not defined as disadvantaged). For science the only outcome of the teacher assessment was whether pupils met the expected standard. For further information on methodology see www.gov.uk/government/collections/using-ofsted-inspection-dashboard

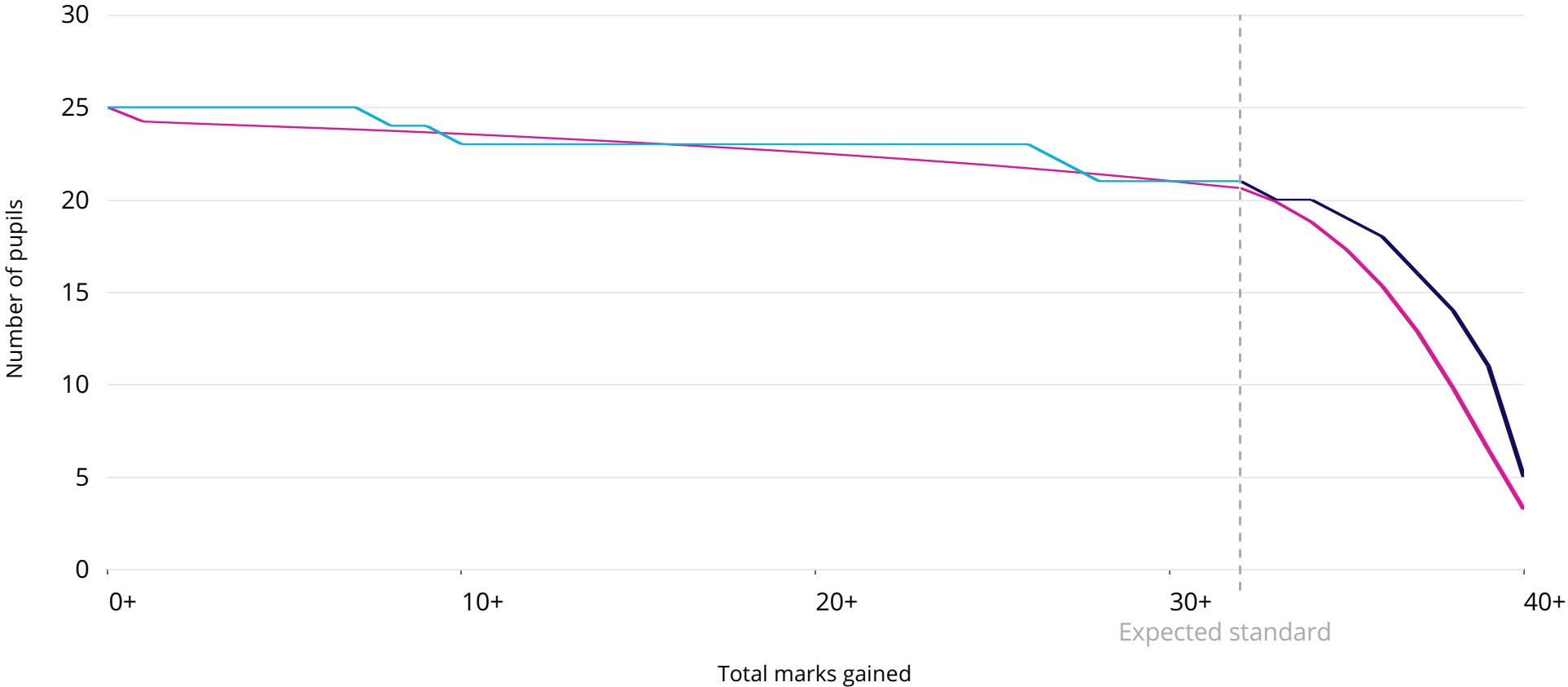
Year 1 phonics marks 2018

This chart shows the distribution of total marks achieved by pupils in the school compared to the national.

— National level
 — Not achieved expected standard
 — Achieved expected standard

Cohort = 25 One pupil relates to 4.0 percentage points.

In 2018, 84% of pupils achieved the expected standard, 1 percentage point above the national proportion. This difference was not statistically significant.



Notes: The plotted national line is the national phonics attainment percentage at each phonics mark multiplied by the whole school phonics attainment cohort. The expected standard for phonics is 32+. For further information on methodology see www.gov.uk/government/collections/using-ofsted-inspection-dashboard